

POWERPLAY ADELAIDE HILLS RALLY



SERVICE GUIDE

13-15 OCTOBER 2023

ROUND 5 BOSCH MOTORSPORT AUSTRALIA RALLY CHAMPIONSHIP



POWERPLAY
ELECTRIC KARTING + GAMES

RALLY.COM.AU/ADELAIDEHILLS



EVENT SPONSORS



CHAMPIONSHIP SPONSORS



General Overview

In Case of a Medical Emergency

Should you be aware of a situation within the rally that requires emergency medical attendance please ring:

RALLY HEADQUARTERS : 0409 817 363

EMERGENCY NUMBER: 0432 226 681

In case of an emergency not directly related to the rally

POLICE, AMBULANCE, COUNTRY FIRE SERVICE - Dial 000

COMPETITOR RELATIONS OFFICERS (CRO's)

Michael Wallace - 0425 840 843

**For all regulations, bulletins and updated information
download the Sportity App:**

Password = ARC



General Overview

Friday 13nd October 2023

		Competitor distance to service/refuel			
	First Car Due	Competitive Distance (km)	Liaison Distance (km)	Total Distance (km)	Time Allowed (mins)
Distance to next refuel - RZ 1		16.36	1.38	17.74	
Start SS 1	18:03				
Flexi Service	19:08				Max 0:15
Service A		16.36	1.00	17.36	2:00 hrs
Service Out/ Parc Ferme In	21:08				
Totals		16.36	1.00	17.36	

General Overview

Saturday 14th October 2023

		Competitor distance to service/			
	First Car Due	Competitive Distance (km)	Liaison Distance (km)	Total Distance (km)	Time Allowed (mins)
Service B (The Bend)	08:00				0:20
Refuel - RZ 2 (All Competitors)		16.72	101.46	118.18	
Start SS 3	09:23				
Service C (Remote Mt Barker)	10:36	16.72	101.46	118.18	0:10
Remote Refuel - RZ 3		16.72	71.63	88.35	
Start SS 5	11:24				
Service D (Remote Mt Barker)	12:37	16.72	71.63	88.35	0:10
Remote Refuel - RZ 4 (Mt Barker)		23.87	29.34	53.21	
Start SS 7	13:10				
Service E (Remote Strathalbyn)	14:08	23.87	29.34	53.21	0:10
Regroup Out	14:28				0:10
Refuel and Tyre Change - RZ 5 (Remote Strathalbyn)		23.87	102.20	126.07	
Start SS 10	14:57				
Flexi Service Holding Area (The Bend)	16:53				0:10 max
Service F (The Bend)		23.87	102.20	126.07	0:30
Regroup out (+10 min for flexi service)	17:48				0:15
Refuel - RZ 6 (All Competitors)		3.34	2.19	5.53	
Start SS 13	18:00				
Flexi Service Holding Area	19:41				0:30
Service G (The Bend)		3.34	2.19	5.53	2:00 hrs
Parc Ferma In	21:41				
Totals		84.52	306.82	391.34	

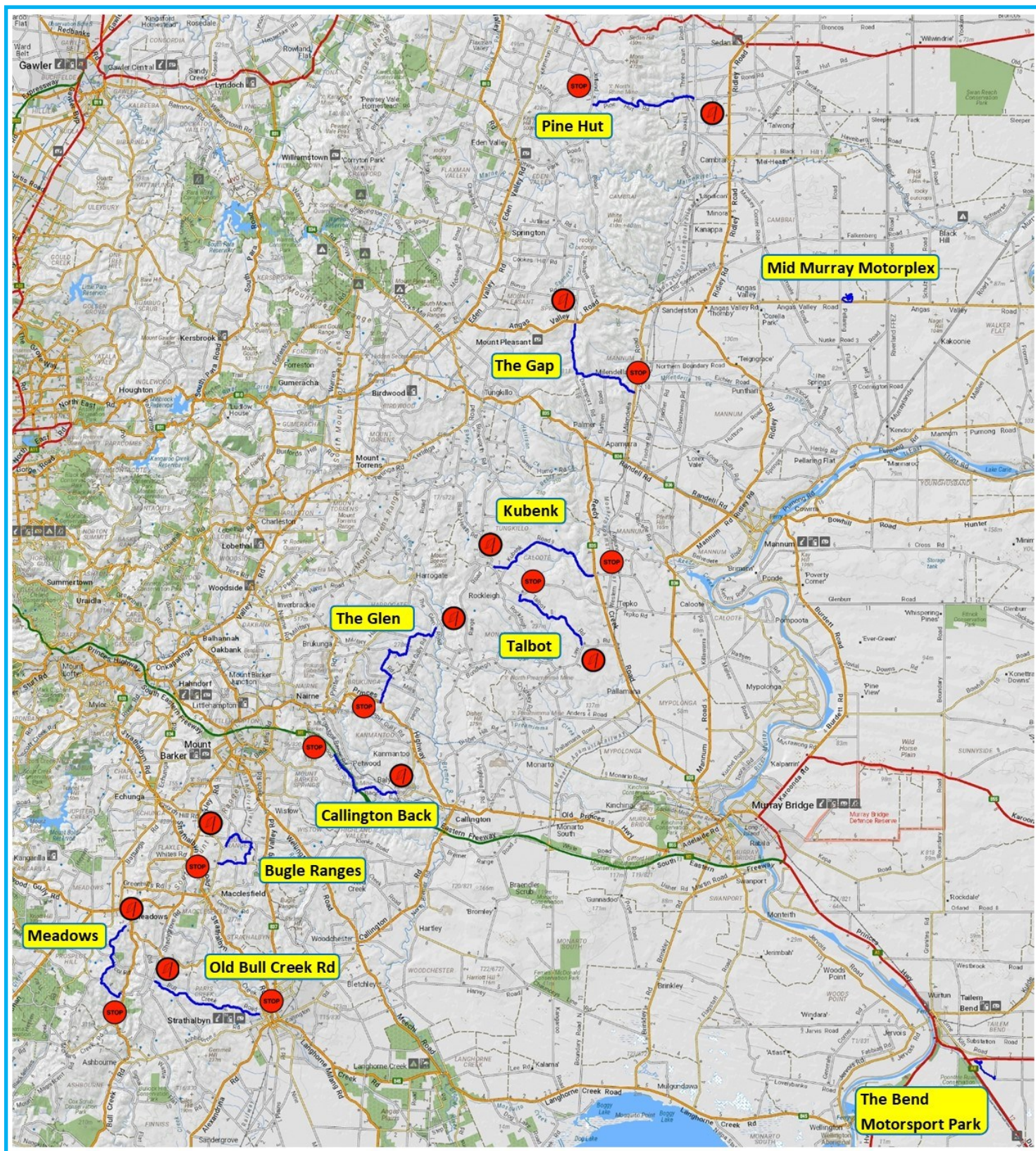
General Overview

Sunday 15th October 2023

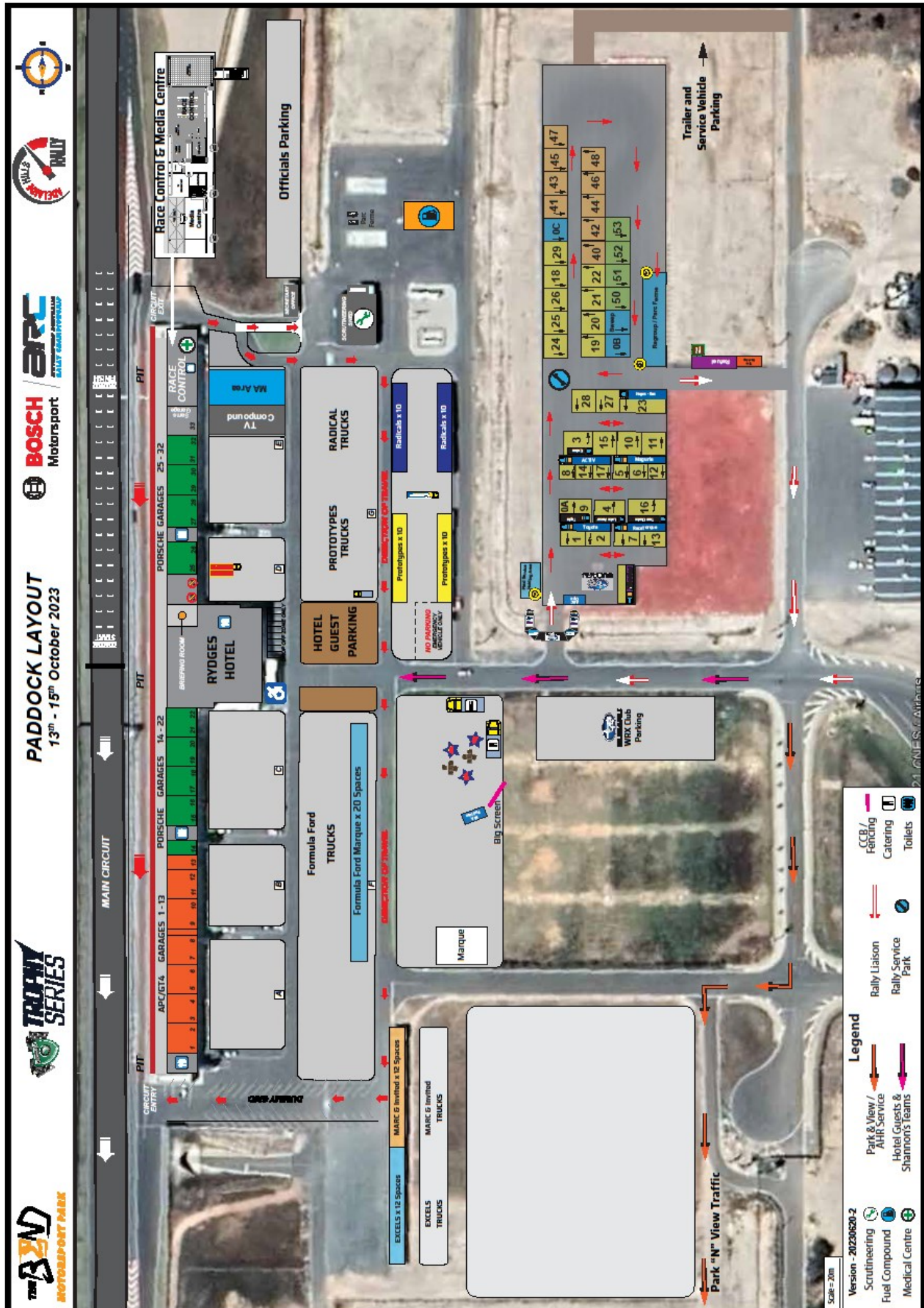
		Competitor distance to service/refuel			
	First Car Due	Competitive Distance (km)	Liaison Distance (km)	Total Distance (km)	Time Allowed (mins)
Service H (The Bend)	07.00				0:20
Refuel - RZ 7 (All Competitors)		20.48	96.01	116.49	
Start SS 15	08.23				
Service I (Remote MMM)	09:43	20.48	96.01	116.49	0:10
Regroup Out	10.03				0:10
Remote Refuel - RZ 8 (MMM) (All Competitors)		21.93	69.48	91.41	
Start SS 18	10.37				
Service J (Remote MMM)	11:54	21.96	68.78	90.74	0:10
Regroup Out	12.14				0:10
Remote Refuel - RZ 9 (MMM) (All Competitors)		34.96	129.55	164.51	
Start SS 21	12.48				
Service In - End of Event Parc Ferme for SARC/SARS	15:19				
Service K (The Bend)		34.96	129.55	164.51	0:30
Regroup Out (+15 min Flexi Service)	16:19				0:30
Remote Refuel - RZ 10 (All Competitors)		3.40	11.03	14.43	
Start SS 25	16.35				
Finish		3.40	11.03	14.43	
Totals		80.80	305.37	386.17	

Summary:	<u>SS</u>	<u>Liaison</u>	<u>Total</u>
Friday 13 October	16.36	1.00	17.36
Saturday 14 October	84.52	306.82	391.34
Sunday 15 October	80.80	305.37	386.17
<u>Totals</u>	<u>181.42</u>	<u>620.03</u>	<u>801.45</u>

Rally Overview Map



The Bend Service Park Layout



Remote Service - The Bend to Mt Barker - Saturday

Crews travelling to the remote service park from The Bend service park need to allow 50 minutes (one way) travel time.

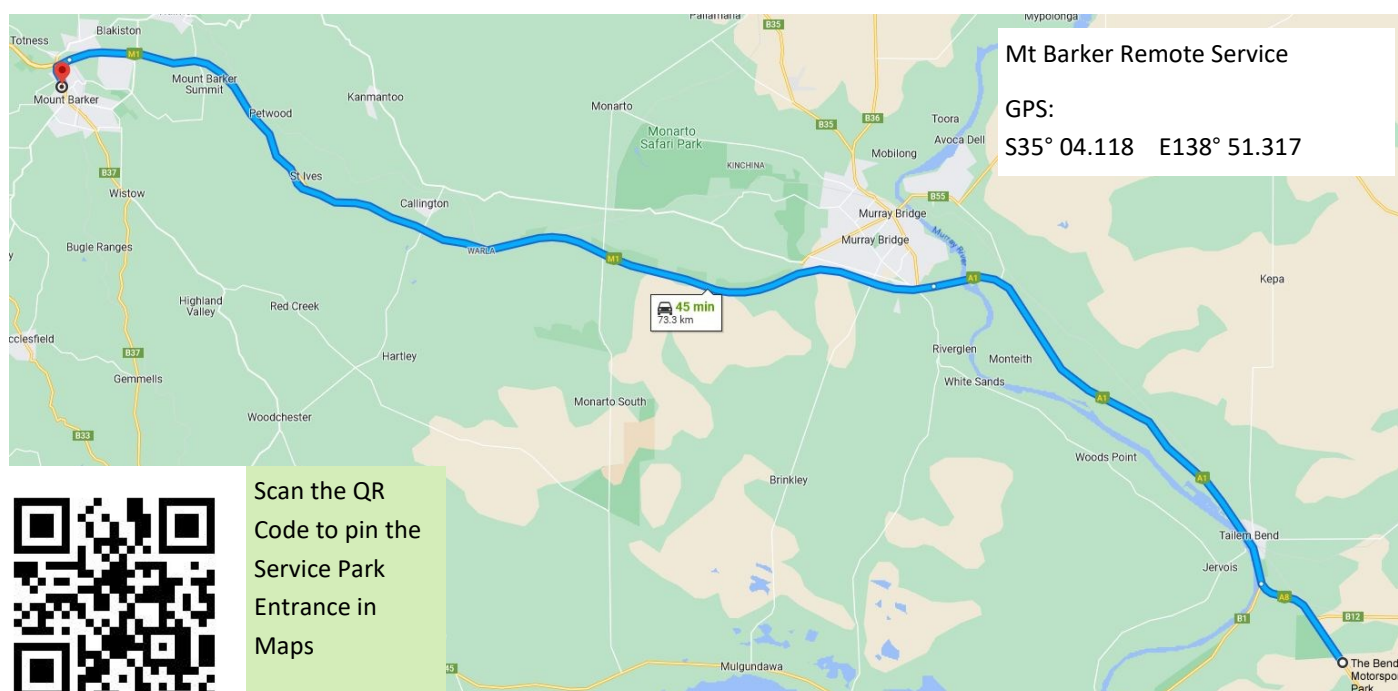
Crews are responsible for their own rubbish and cleaning up their area.

No rubbish to be left behind.

Total Dist	Inter Dist	Instruction
0.00	0.00	Leave The Bend Motorsport Park via Bethlehem Way heading North-West
0.7	0.70	At the round-a-bout take the first exit towards Dukes Hwy (A8).
1.0	0.30	Turn right onto Dukes Hwy (A8) towards Taillem Bend.
6.4	5.40	Continue on Princess Hwy/South Eastern Fwy (A1) through Taillem Bend.
26.9	20.5	Continue across the Swanport Bridge
72.5	45.6	Take the Adelaide Rd, Mt Barker/Hahndorf exit.
73.2	0.70	Turn left onto Adelaide Road
74.1	0.90	Turn right onto Dumas Street
74.3	0.20	Turn left into carpark sign posted "LIBRARY"
		Turn immediate left then immediate right and park as directed by the officials.

Please note that this is a public carpark and the crew parking area is still open to the public so be considerate as to how you park.

No long vehicles (three axles or more) are to be parked in this area, service park officials will advise where these are to be parked. Trailers may also need to be left remote from your vehicle.



Overview Remote Service area - Mt Barker



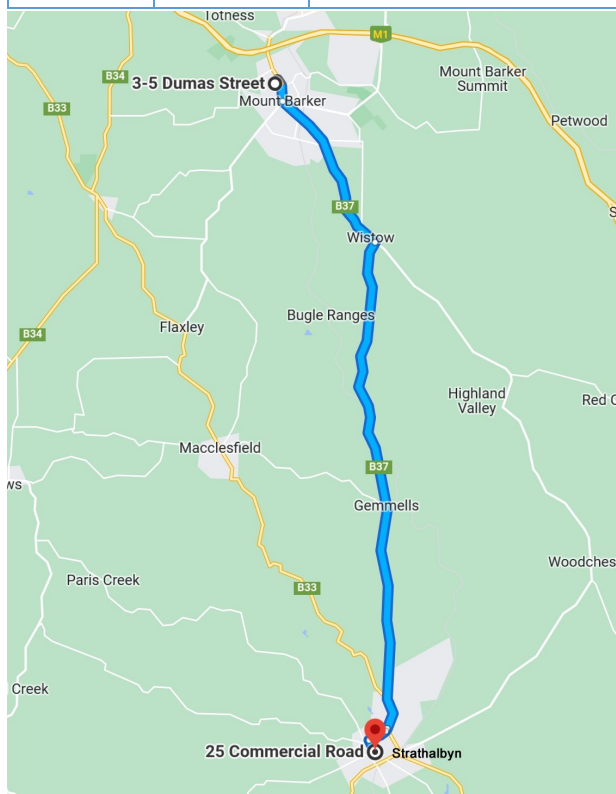
Remote Service - Mt Barker to Strathalbyn - Saturday

Crews travelling from the Mt Baker remote service park to the Strathalbyn remote service park need to allow 25 minutes (one way) travel time.

Crews are responsible for their own rubbish and cleaning up their area.

No rubbish to be left behind.

Total Dist	Inter Dist	Instruction
0.00	0.00	Exit the Service Park area and turn right onto Dumas Street.
0.35	0.35	Turn right at the traffic lights (Adelaide Rd).
0.65	0.30	At the round-about take the second exit (Adelaide Rd).
1.10	0.45	At the round-about take the second exit (Wellington Rd).
1.80	0.70	At the round-about take the second exit (Wellington Rd).
2.30	0.50	At the round-about take the second exit (Wellington Rd).
3.10	0.80	At the round-about take the second exit (Wellington Rd).
6.70	3.60	Turn Right into Long Valley Rd.
22.6	15.90	At the round-about take the second exit (Adelaide Rd).
		Adelaide Rd becomes North Pde
22.9	0.30	Turn right to stay on North Pde.
23.3	0.40	Turn left onto Commercial Rd.
23.7	0.40	Straight on into Service Park area and park as directed by the officials.



Strathalbyn Remote Service

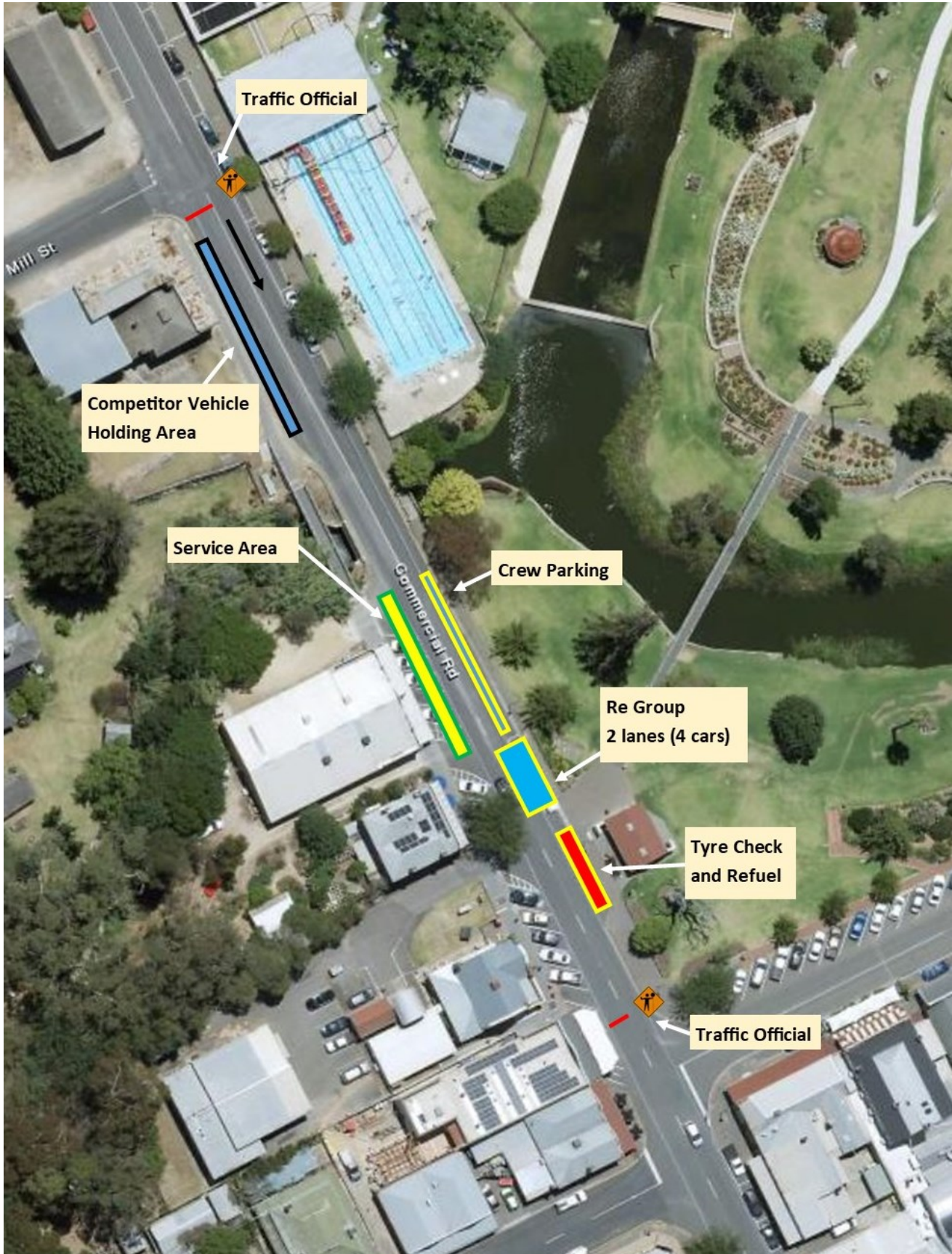
GPS:

S35° 15.485 E138° 53.387



Scan the QR
Code to pin the
Service Park
Entrance in
Maps

Overview Remote Service area Strathalbyn

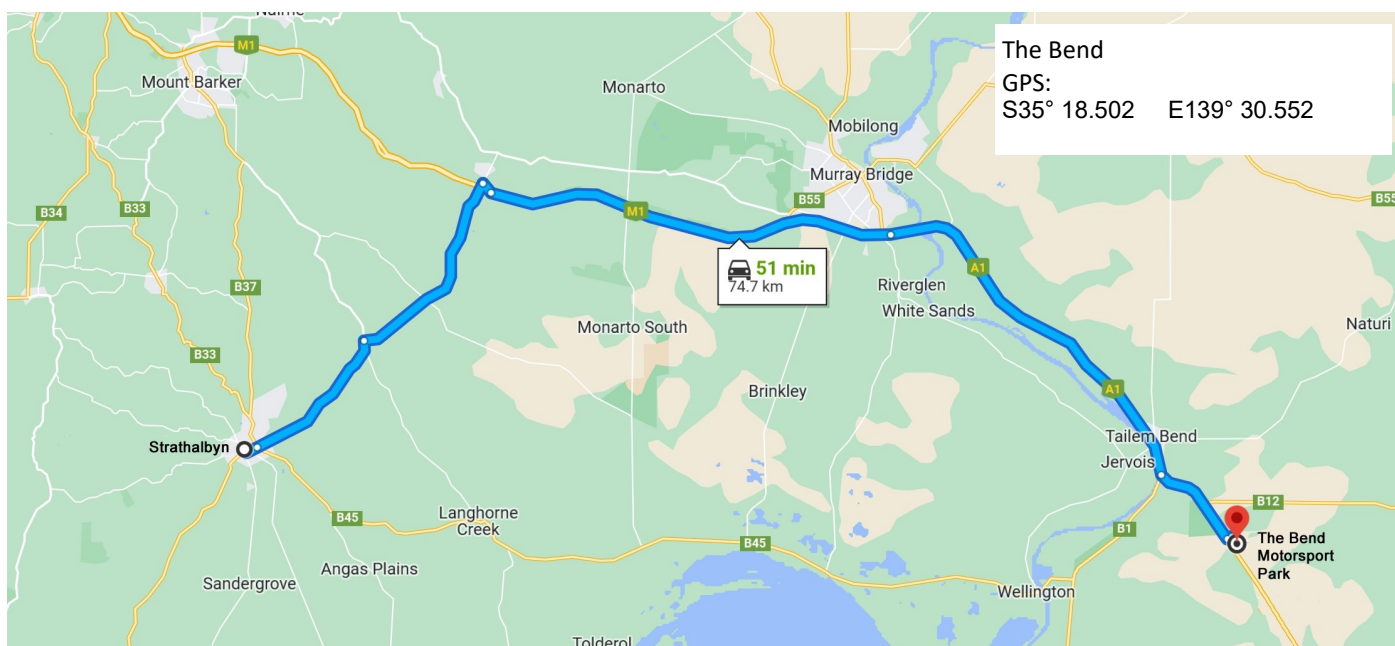


Strathalbyn remote service park to The Bend service park - Saturday

Crews travelling from the Strathalbyn remote service park to The Bend Service Park need to allow 50 minutes (one way) travel time.

Total Dist	Inter Dist	Instruction
0.00	0.00	Exit the Remote Service Area and continue straight on Dawson St.
0.22	0.22	At the T Junction turn left onto South Tce (B37).
0.90	0.90	Continue on South Tce. At the round-a-bout, take the second exit onto Callington Rd.
9.90	9.20	At cross road turn right to stay on Callington Rd.
22.0	12.1	Cross the freeway bridge and turn right to Murray Bridge M1
22.7	0.65	Merge onto South Eastern Freeway
64.6	42.0	Continue on South Eastern Freeway (M1/A1) into Tailem Bend to The Bend Motorsport Park.
73.9	9.20	Turn left into The Bend Motorsport Park.
74.1	0.27	At the round-a-bout take the third exit onto Bethlehem Way
74.9	0.60	Through The Bend entry gate, turn immediate right.
75.02	0.12	Turn left, then right into the Service Park.

Please do not plan you own route back to The Bend service park that takes you via the Murray River Ferry as this is to be used by the competition crews and we do not want to create a traffic jam at that point.



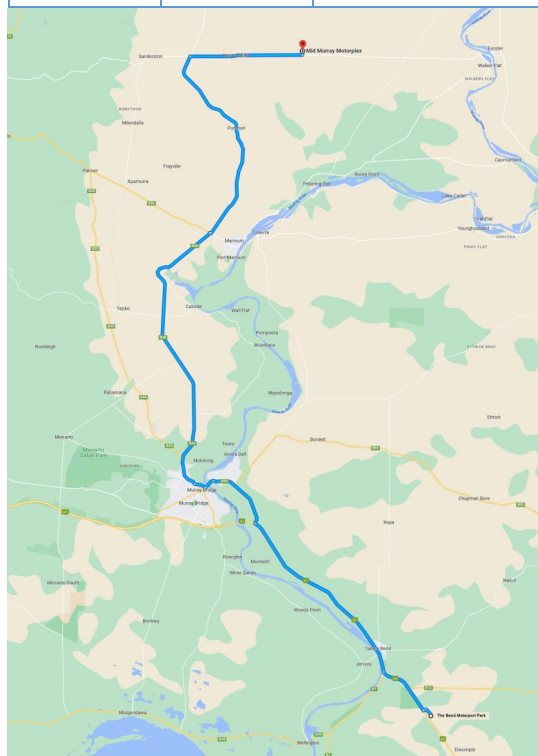
Remote Service - The Bend to MMM - Sunday

Crews travelling to the remote service park from The Bend service park need to allow 70 minutes (one way) travel time.

Crews are responsible for their own rubbish and cleaning up their area.

No rubbish to be left behind.

Total Dist	Inter Dist	Instruction
0.00	0.00	Leave The Bend Motorsport Park via Bethlehem Way heading North-West
0.7	0.70	At the round-a-bout take the first exit towards Dukes Hwy (A8).
1.0	0.30	Turn right onto Dukes Hwy (A8) towards Taillem Bend.
6.4	5.40	Continue on Princess Hwy/South Eastern Fwy (A1) through Taillem Bend.
27.0	20.6	Continue across the Swanport Bridge
28.5	1.60	Take the Murray Bridge/Wellington exit.
29.2	0.70	Turn right, Murray Bridge B35, Swanport Rd.
32.0	2.80	At the round-a-bout take the second exit.
33.1	1.10	Continue straight on at the traffic lights onto Mannum Rd.
62.0	28.9	Turn right onto Randle Rd.
62.1	0.10	Turn left onto Ridley Rd towards Sedan.
82.1	20.0	Turn right onto Angus Valley Rd towards Sedan/walker Flat
92.6	10.5	Turn left onto Starick Rd.
93.0	0.40	Turn right into Mid Murray Motorplex and park as directed by the officials.



Mid Murray Motorplex Remote Service

GPS:

S34° 45.011 E139° 22.974



Scan the QR Code to pin the Service Park Entrance in Maps

MOTORSPORT IS DANGEROUS

Motorsport Activities are inherently dangerous recreational activities and there is significant risk of injury, disability or death.

If you do not wish to be exposed to such risks, then you should not attend or participate in the Motorsport Activities.

Acknowledgement of Risks

I acknowledge that the risks associated with attending or participating in Motorsport Activities include but are not limited to the risk that I may suffer harm as a result of:

- motor vehicles (or parts of them) colliding with other motor vehicles or persons or property;
- other participants acting dangerously or with lack of skills;
- high levels of noise exposure;
- acts of violence and other harmful acts (whether intentional or inadvertent) committed by persons attending or participating in the event; and
- the failure or unsuitability of facilities (including grand-stands, fences and guard rails) to ensure my safety.

Exclusion of Liability, Release and Indemnity

In exchange for being able to attend or participate in the Motorsport Activities, I will and agree to:

- to release Motorsport Australia and the Entities to the extent that any or all of them are providing Recreational Services from all liability for:
 - my death;
 - any physical or mental injury (including the aggravation, acceleration or recurrence of such an injury);
 - the contraction, aggravation or acceleration of a disease including but not only COVID-19;
 - the coming into existence, the aggravation, acceleration or recurrence of any other condition, circumstance, occurrence, activity, form of behaviour, course of conduct or state of affairs:
 - that is or may be harmful or disadvantageous to me or the community; or
 - that may result in harm or disadvantage to me or the community,
 - any claim for any costs and expenses I may incur as a consequence of any of the above; arising from my participation in or attendance at the Motorsport Activities;
- to indemnify and hold harmless and keep indemnified Motorsport Australia and the Entities to the maximum extent permitted by law in respect of any Claim by any person; and
- to attend at or participate in the Motorsport Activities at my own risk.

Part text from Motorsports Australian Risk Warning, Disclaimer and Indemnity, for the full document visit: <https://motorsport.org.au/events/disclaimers>



PowerPlay



Adelaide Hills Rally 2023

Service Guide

Notes:

We would like to thank all our volunteer officials, companies and groups for their continuing support of the Adelaide Hills Rally.

Without your involvement the event would not be possible



SUBARU

Confidence in Motion



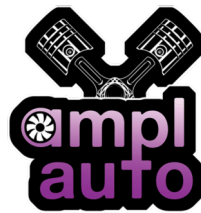
COPYWORLD



READ BROTHERS



workzone
Traffic Control



Clemco
PTY LTD
Quality Langhorne Creek
Almonds

asp

Application
Service Provider



MOUNT BARKER
DISTRICT COUNCIL